



Cardiac Pathology 1: Blood Vessels

Kristine Krafts, M.D.

Cardiac Pathology Outline

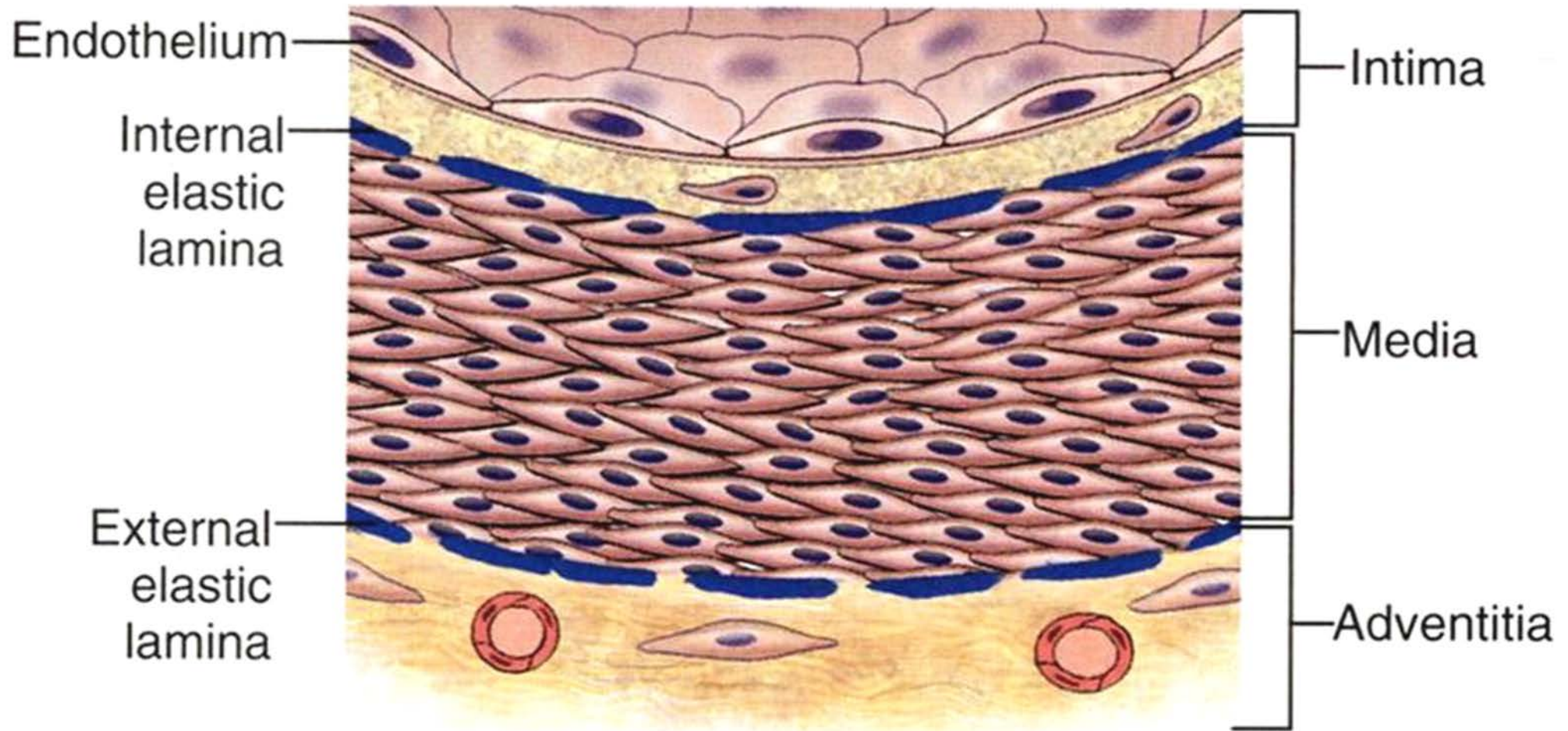
- Blood Vessels
- Heart I
- Heart II

Cardiac Pathology Outline

- Blood Vessels
 - Atherosclerosis
 - Hypertension
 - Aneurysms
 - Vasculitis
 - Tumors

Cardiac Pathology Outline

- Blood Vessels
 - Atherosclerosis



Normal blood vessel

Atherosclerosis

- Characterized by atheromas (plaques)
- Half of deaths in US!
- Most common cause of myocardial infarction
- Most common cause of cerebral infarction

Major Risk Factors for Atherosclerosis

Non-modifiable

- Increasing age
- Male gender*
- Family history
- Genetic abnormalities

Modifiable

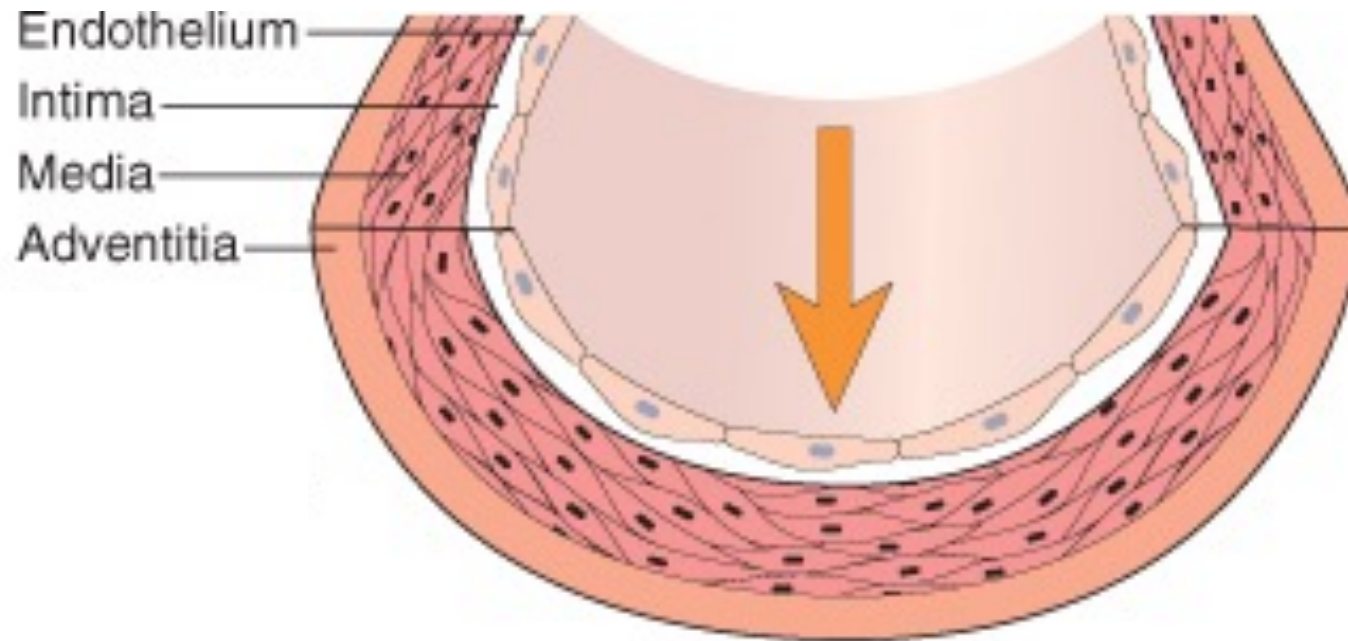
- Hyperlipidemia
- Hypertension
- Cigarette smoking
- Diabetes

* Sort of. MI is uncommon in premenopausal women, but after menopause, incidence in women exceeds that in men.

Other Risk Factors for Atherosclerosis

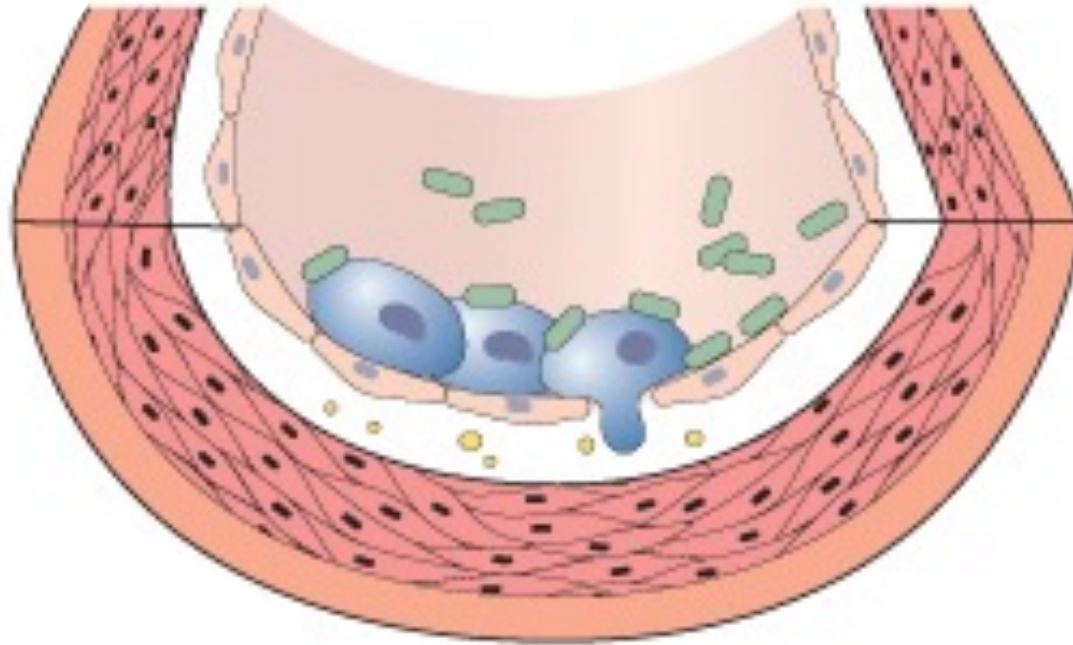
- Inflammation
- Metabolic syndrome
- Obesity
- Lack of exercise
- Stress

How to Make an Atheroma



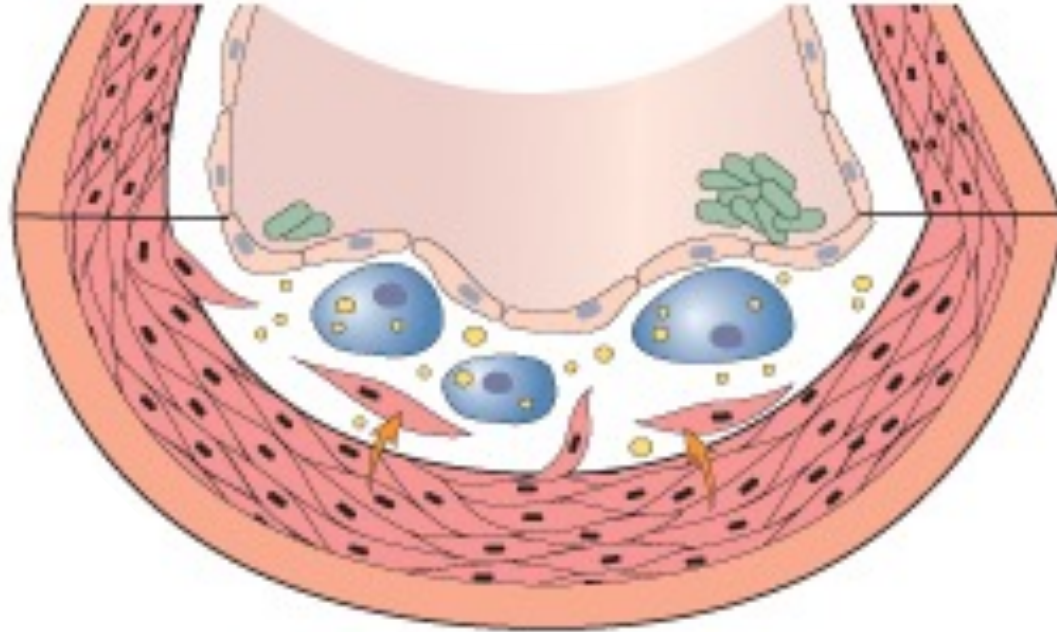
1 Chronic endothelial injury

How to Make an Atheroma



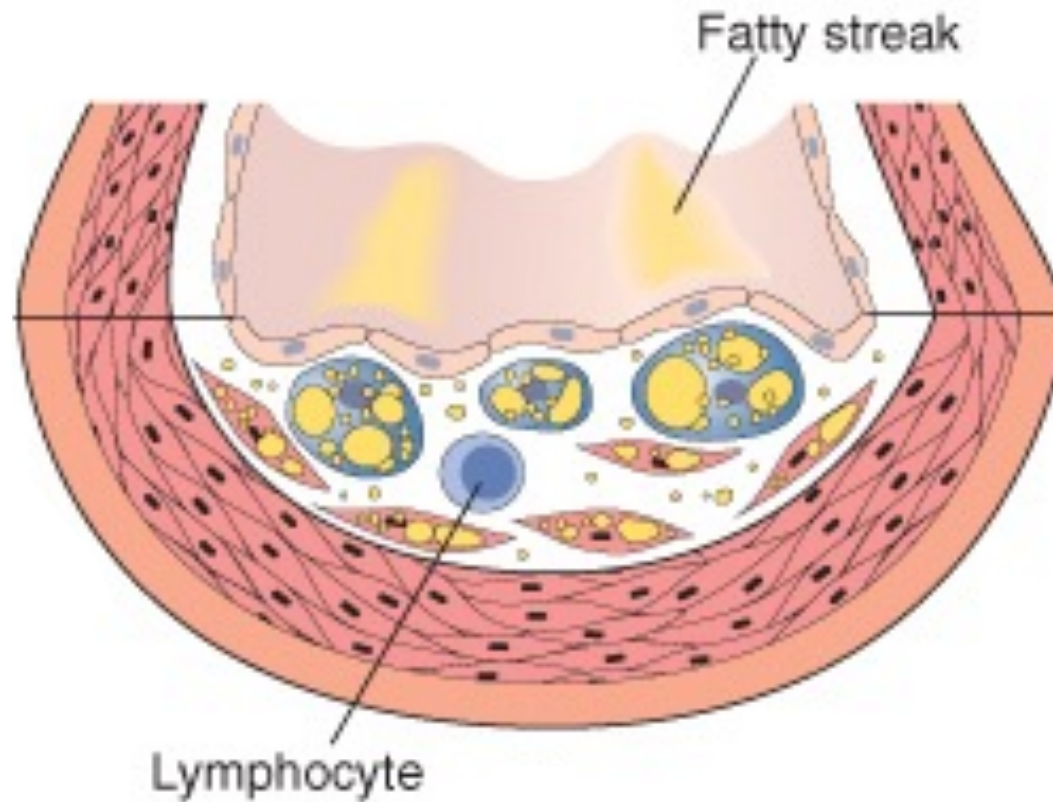
- 2 Endothelial dysfunction
Monocyte adhesion and emigration

How to Make an Atheroma

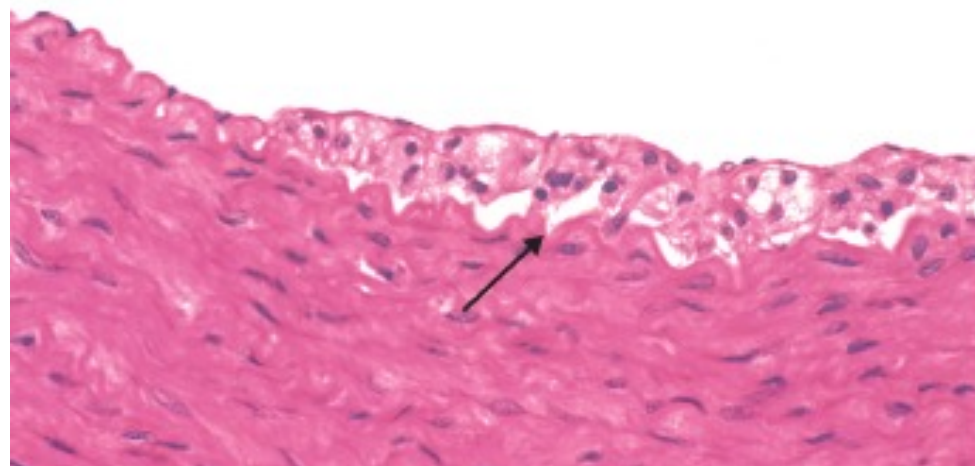


- 3 Macrophage activation
Smooth muscle recruitment

How to Make an Atheroma

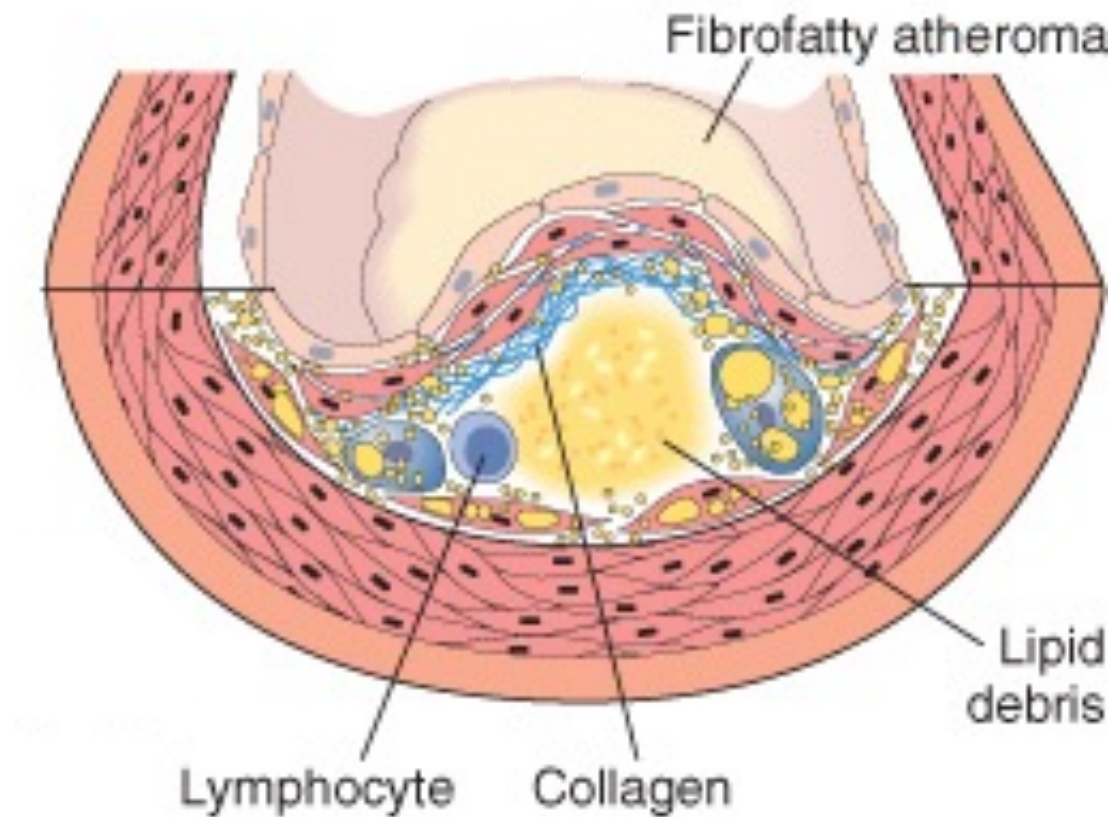


4 Macrophages and smooth muscle cells engulf lipid

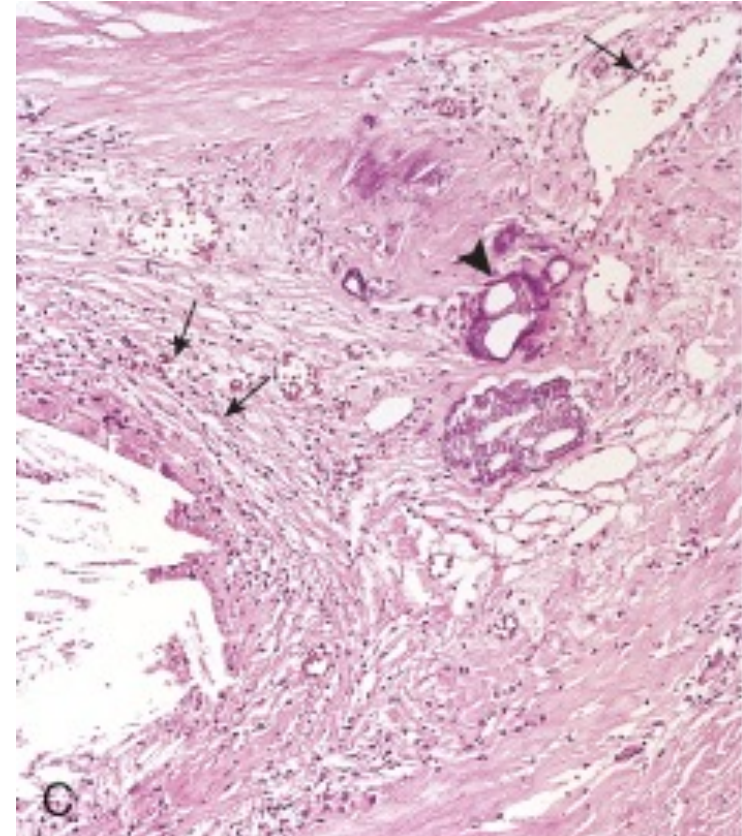
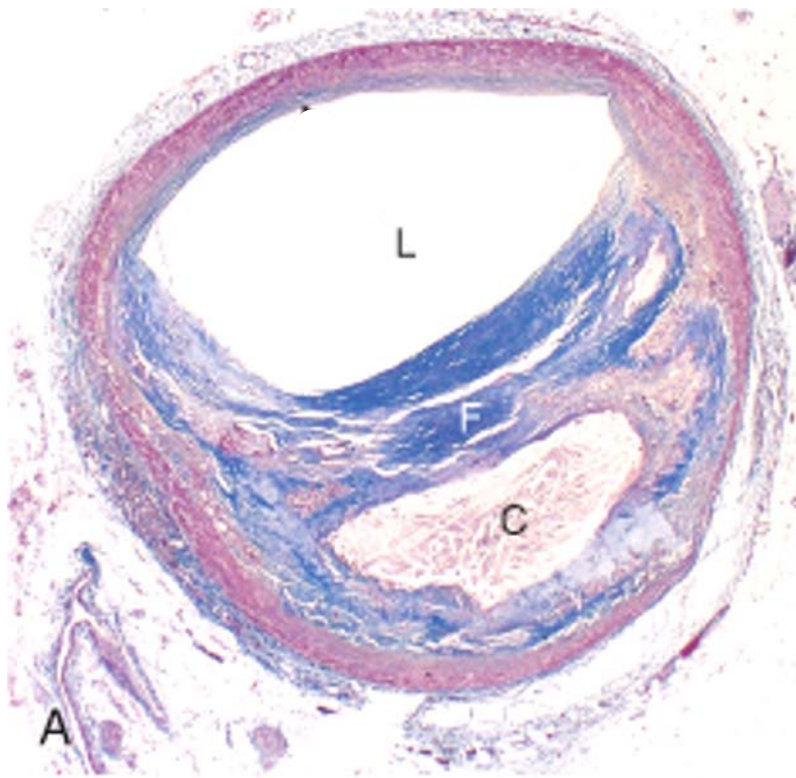


Fatty streaks

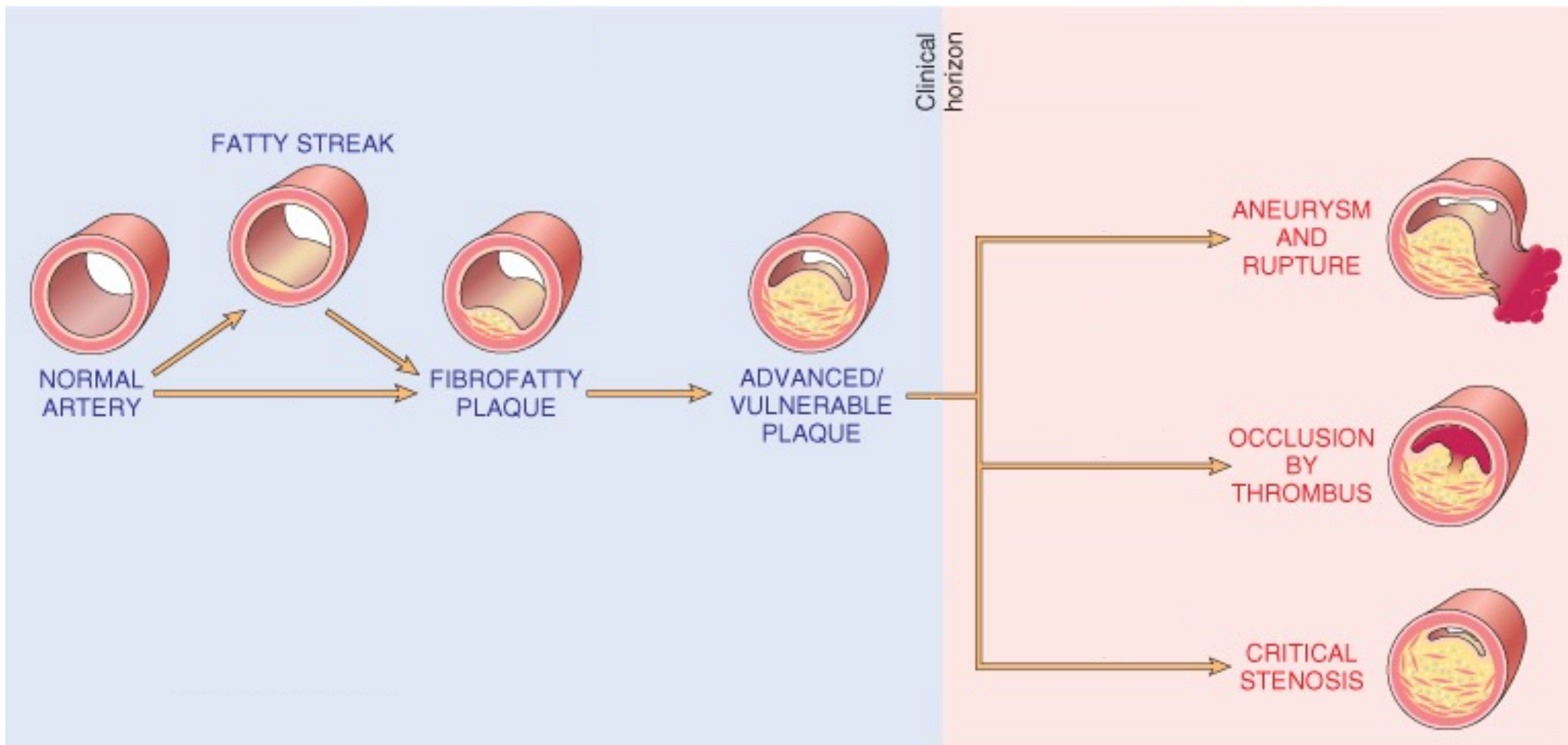
How to Make an Atheroma



- 5 Smooth muscle proliferation
Collagen and extracellular lipid deposition



Atheromatous plaques



Natural history of atherosclerosis

Prevention of Atherosclerosis

- Primary prevention
 - Lessen risk factors
 - Statins
- Secondary prevention
 - Aspirin, statins, beta blockers
 - Surgery

Cardiac Pathology Outline

- Blood Vessels
 - Atherosclerosis
 - Hypertension

Types of Hypertension

- Benign hypertension
 - Essential (idiopathic) hypertension
 - Secondary hypertension
- Malignant hypertension

Essential Hypertension

- Common problem (25% of population)
- Asymptomatic until late
- Contributes to coronary artery disease, stroke, cardiac hypertrophy, heart failure
- Mechanisms largely unknown
- >140/90

Essential Hypertension

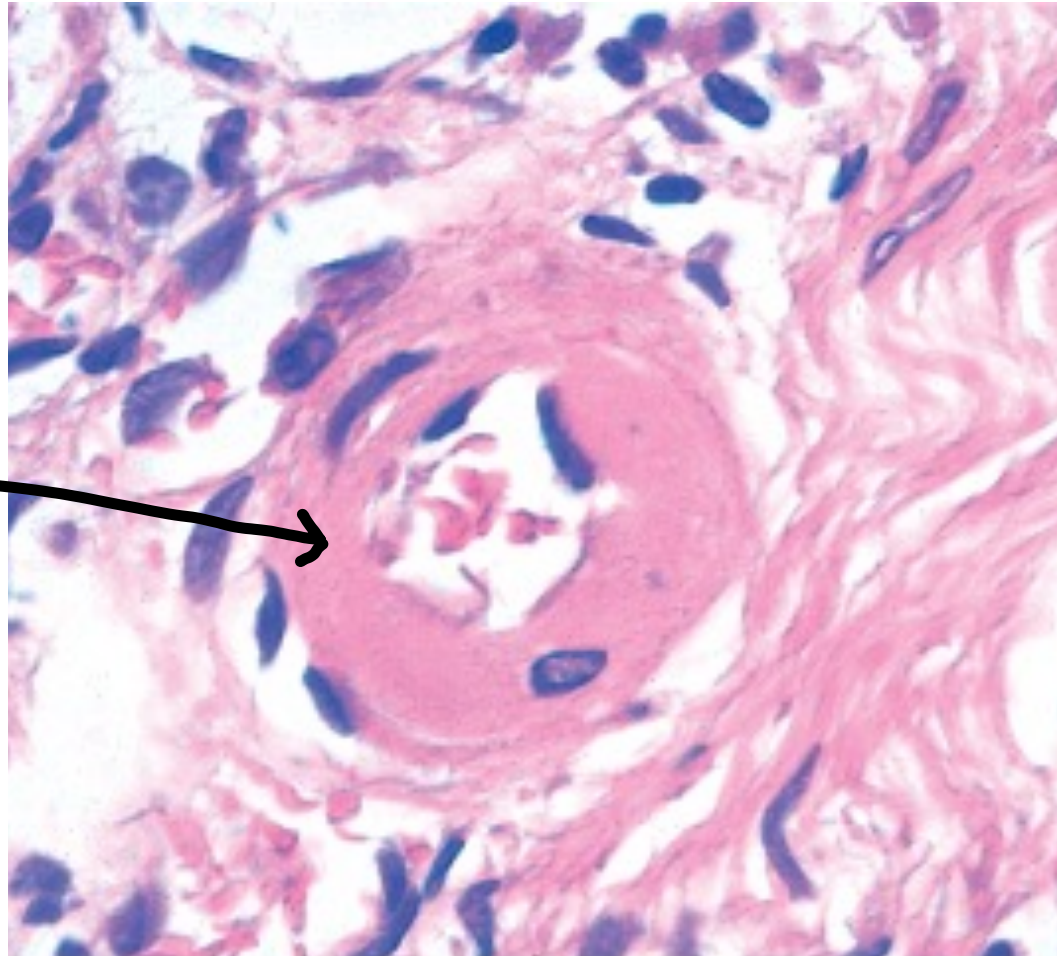
- Idiopathic! But probably related to...
- Reduced renal sodium excretion
- Vascular changes
- Genetic factors
- Environmental factors

Essential Hypertension

Consequences

- Accelerates atherogenesis
- Potentiates aortic dissection and stroke
- Causes small blood vessel disease (hyaline arteriolosclerosis)

Thickened
vessel wall



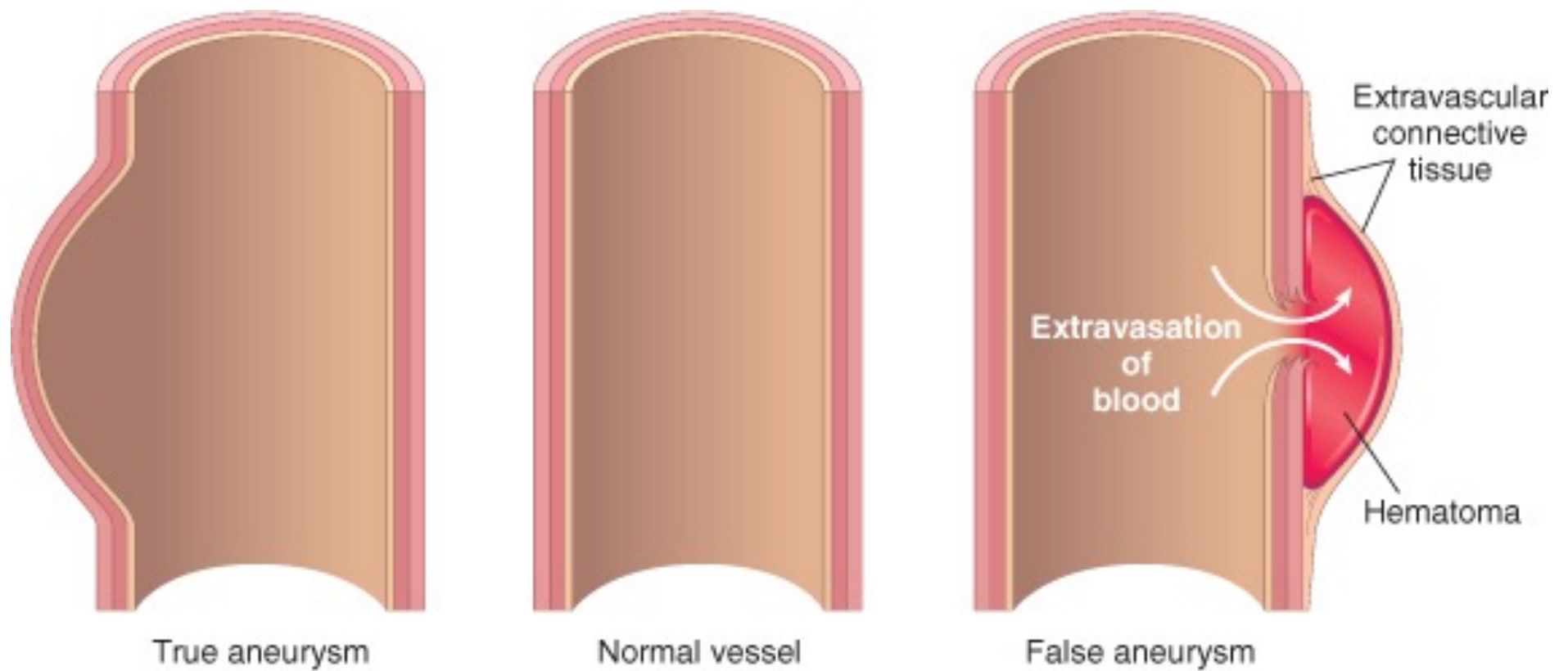
Hyaline arteriolosclerosis

Cardiac Pathology Outline

- Blood Vessels
 - Atherosclerosis
 - Hypertension
 - Aneurysms

Aneurysms

- Aneurysm: localized abnormal vessel dilation
- “True” aneurysm: involves all three layers
- “False” aneurysm: hole covered with hematoma



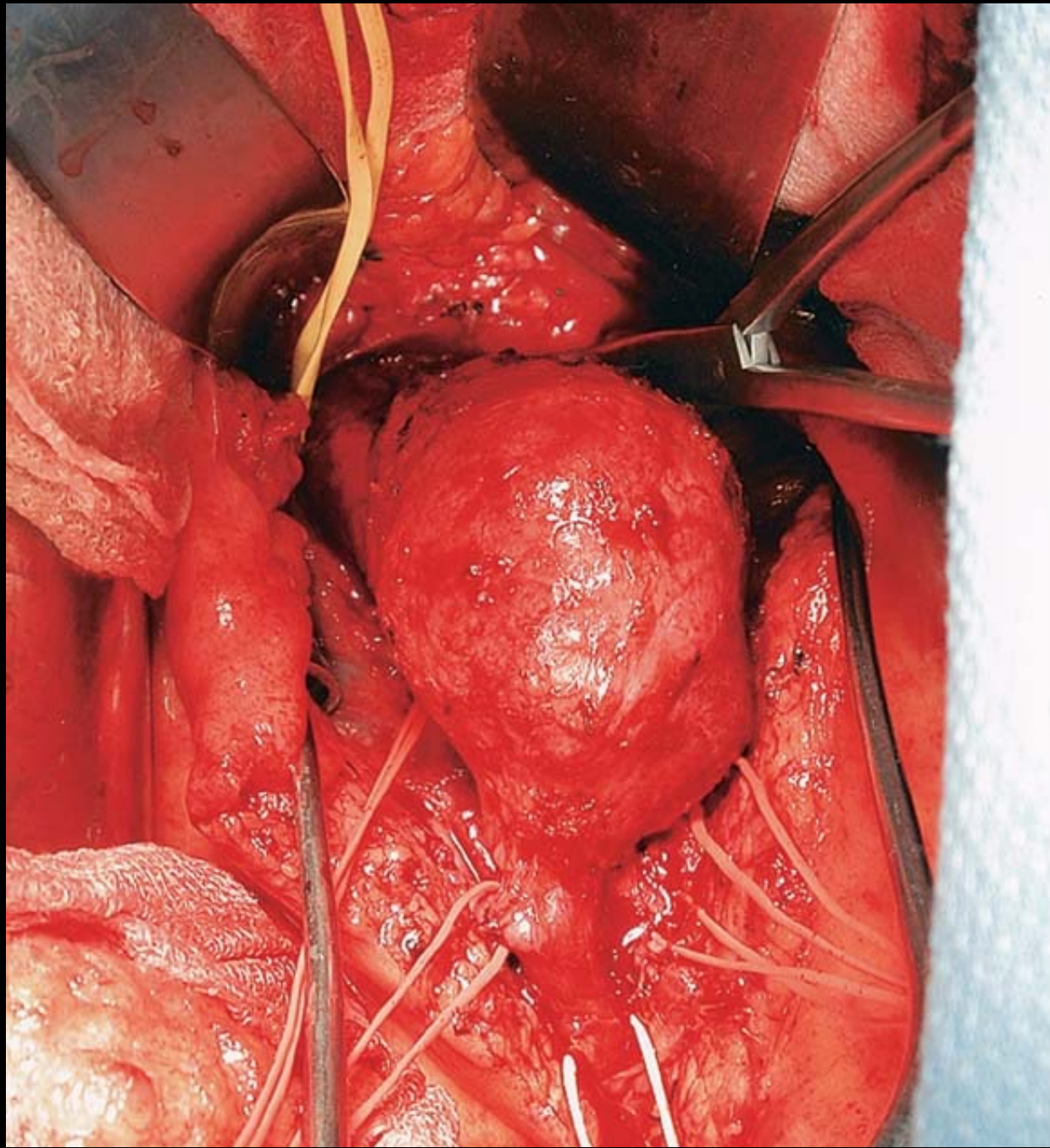
True and false aneurysms

Causes of Aneurysms

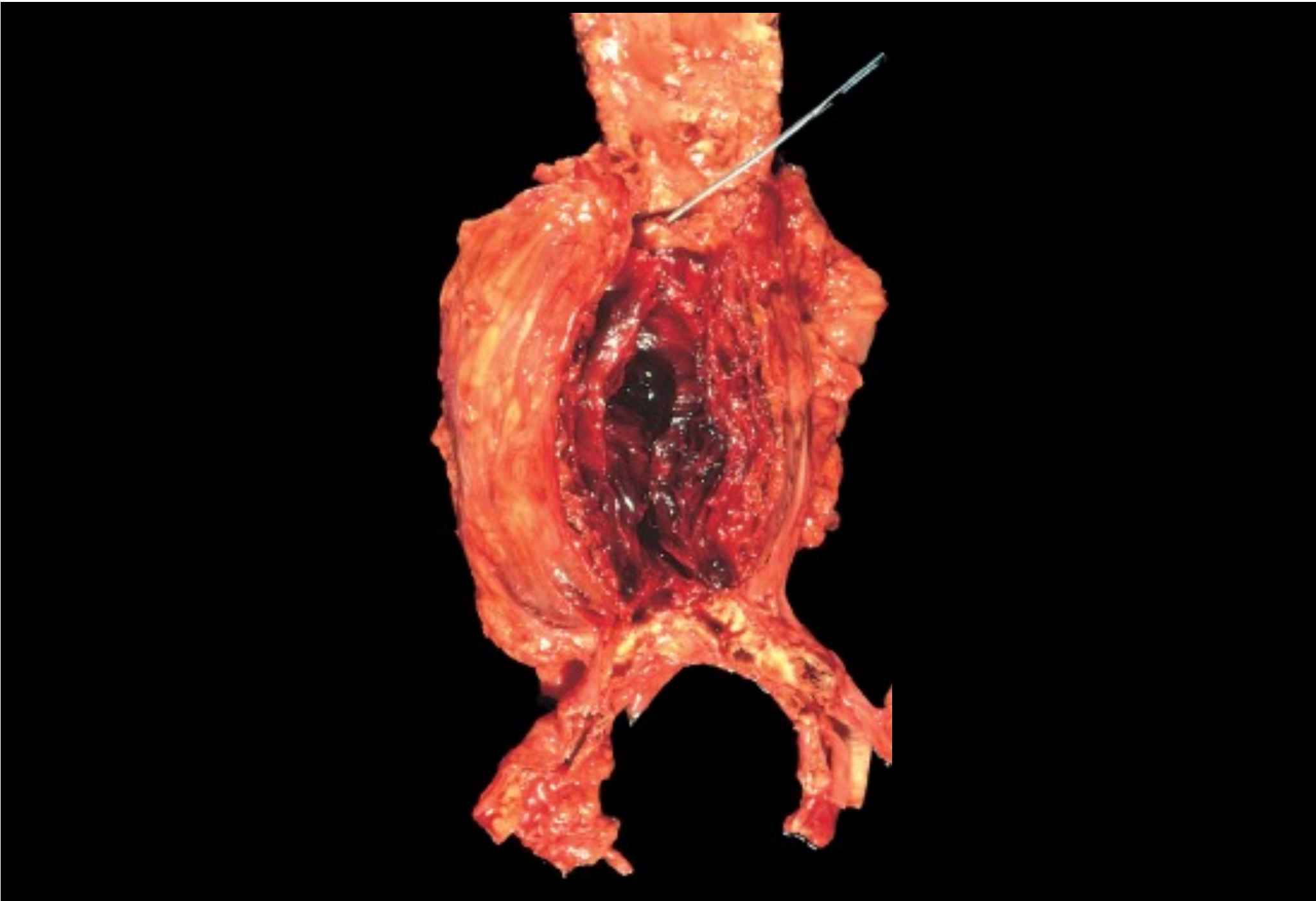
- Atherosclerosis
- Cystic medial degeneration of wall
- Trauma
- Congenital defects (berry aneurysm)

Abdominal Aortic Aneurysm

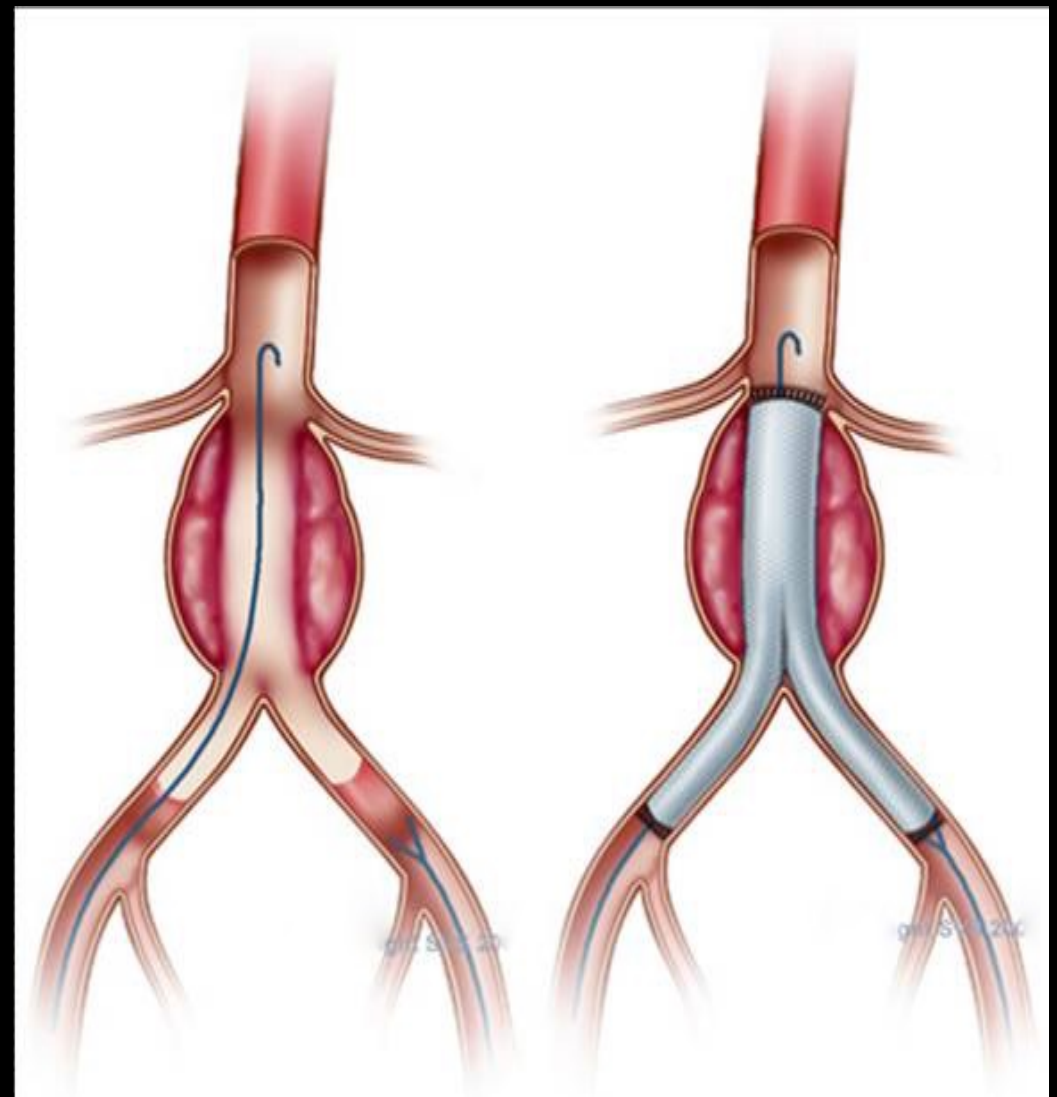
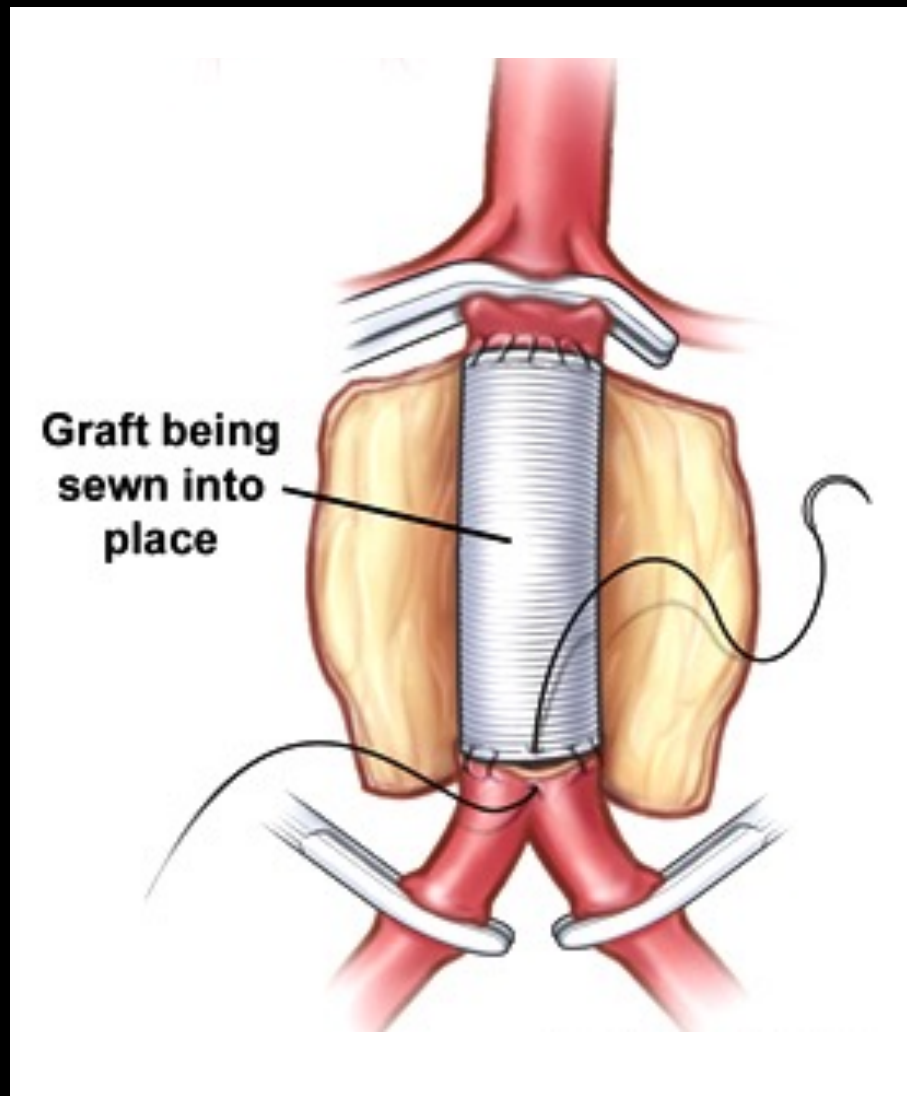
- Males >50
- Atherosclerosis, genetic defects (Marfan syndrome)
- Below renal arteries, above bifurcation
- May present as pulsating abdominal mass
- May rupture, obstruct branches or embolize



Abdominal aortic aneurysm



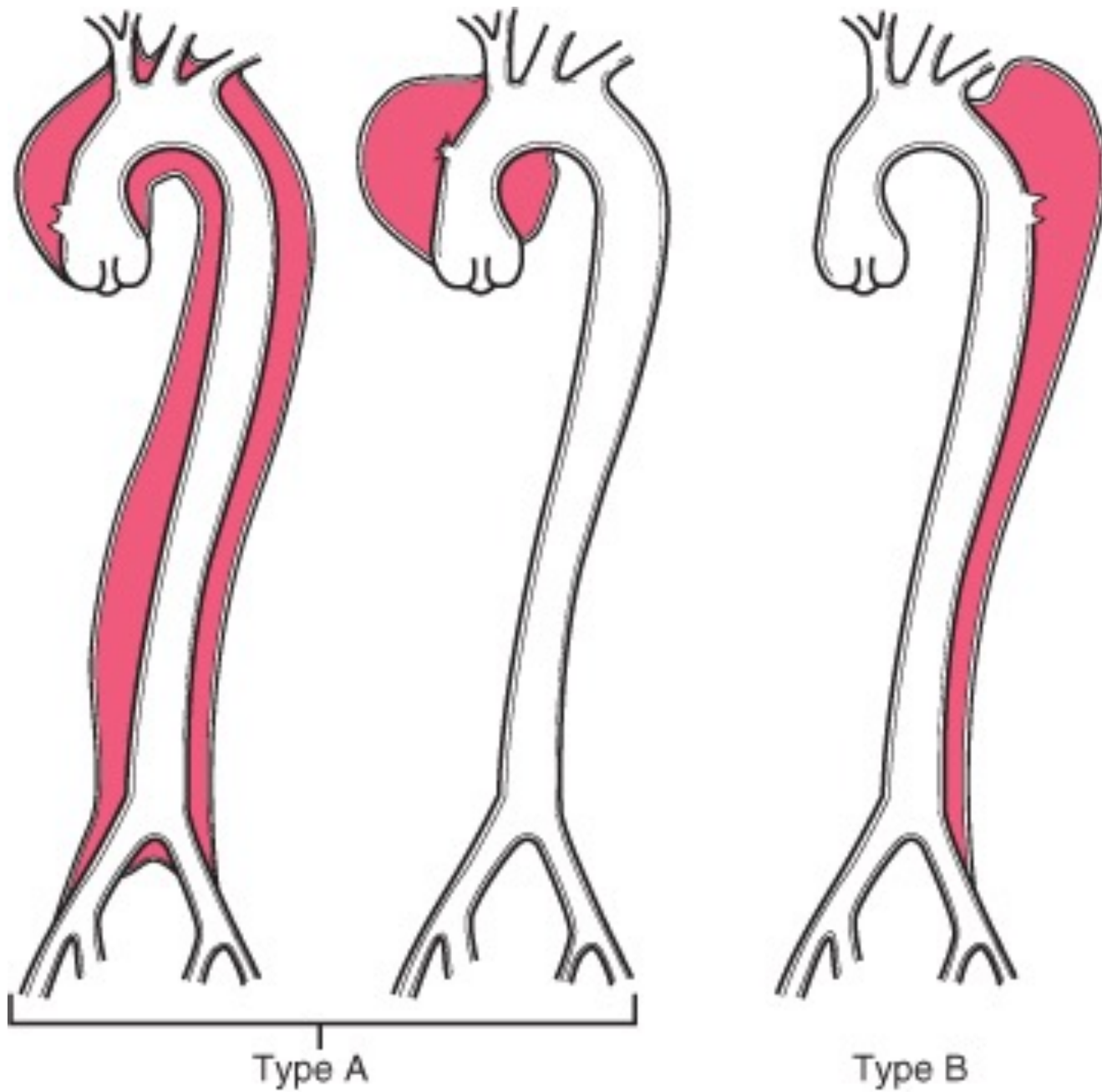
Abdominal aortic aneurysm



Abdominal aortic aneurysm repair

Aortic Dissection

- Blood tracks up through media, creating a channel
- Hypertensive men, 40-60 (most cases)
- Sudden onset excruciating pain
- Can rupture → massive hemorrhage or cardiac tamponade
- Rapid diagnosis, surgery = 65-75% of patients survive



Types of aortic dissection

Cardiac Pathology Outline

- Blood Vessels
 - Atherosclerosis
 - Hypertension
 - Aneurysms
 - Vasculitis

Vasculitis

- Inflammation of vessel walls
- Many possible symptoms
- Constitutional signs/symptoms common
- Immune-mediated or infectious

Summary of Vasculitides

Vessel	Disease	ROS *
Large	Giant-cell arteritis	>50. Arteries of head.
	Takayasu arteritis	F <40. “Pulseless disease”
Medium	Polyarteritis nodosa	Young adults. Widespread.
	Kawasaki disease	<4. Coronary disease. Lymph nodes.
Small	Wegener granulomatosis	Lung, kidney. c-ANCA.

* Ridiculously oversimplified summary

Giant-Cell (Temporal) Arteritis

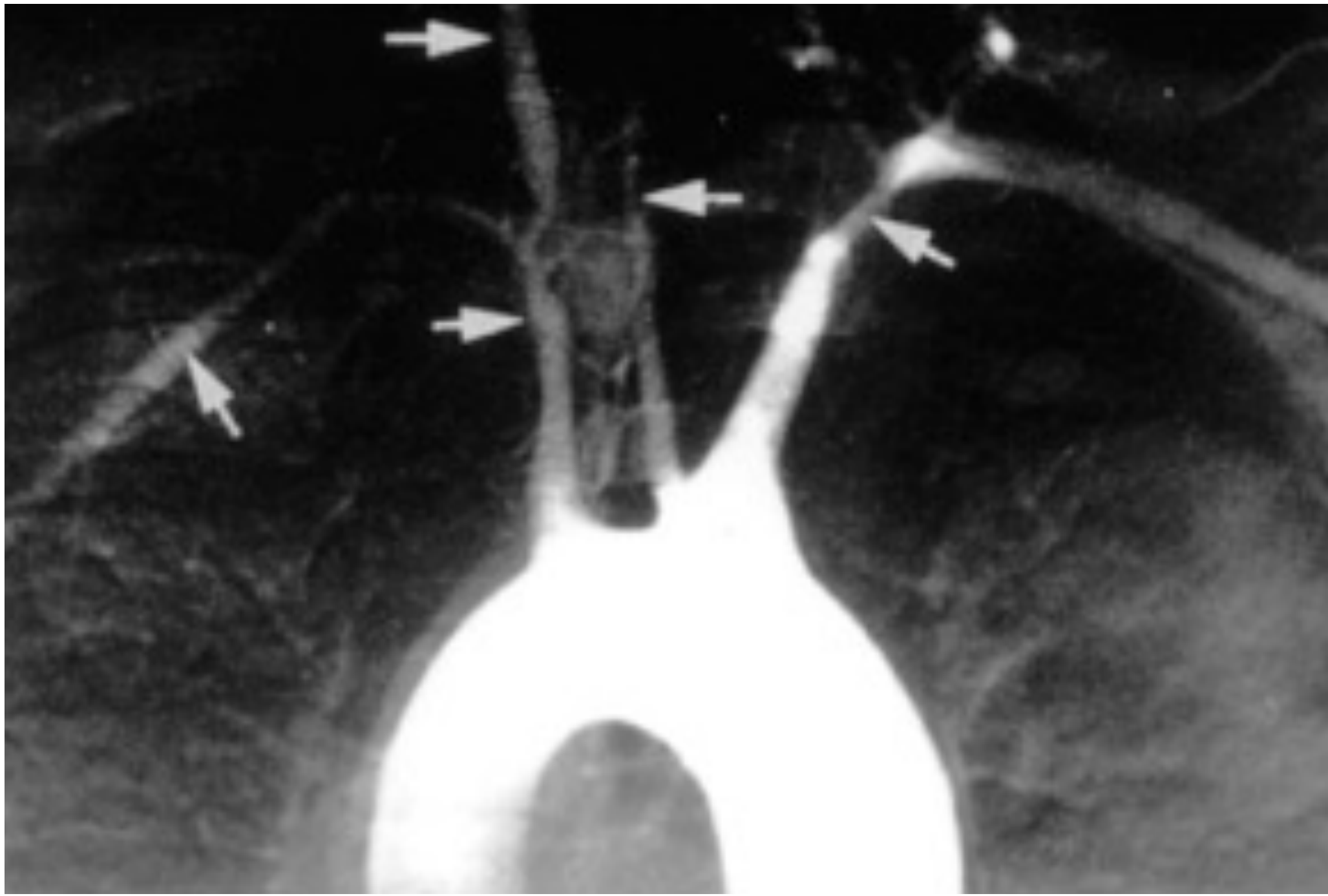
- Most common type of vasculitis
- Patients >50
- Chronic, granulomatous inflammation of large to small arteries, especially in head
- Symptoms vague (fever) or localized (headache, vision loss)
- Treatment: corticosteroids



Giant cell (temporal) arteritis

Takayasu Arteritis

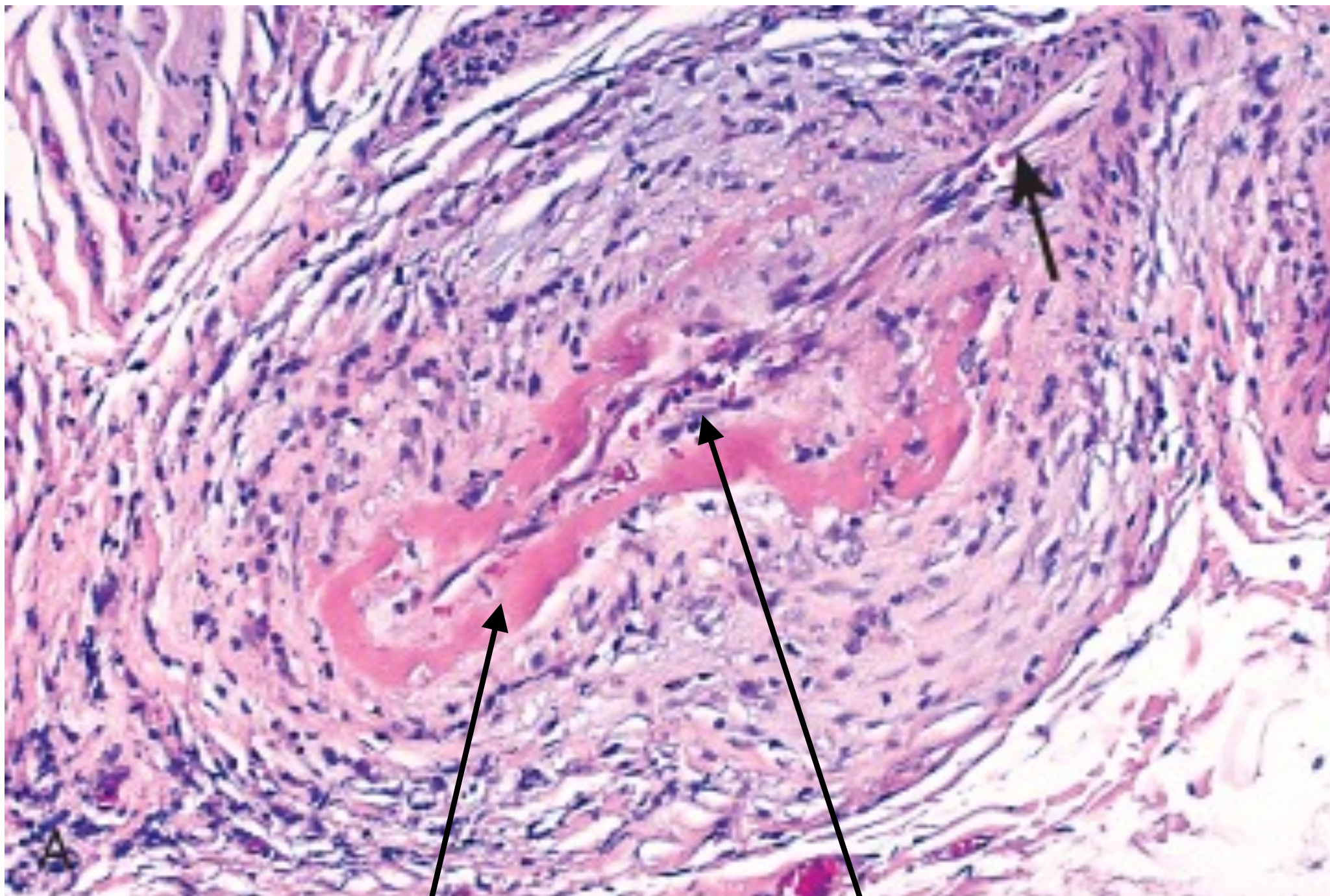
- Women <40
- Granulomatous vasculitis of aortic arch
- Severe narrowing of major branches
- Weakening of pulses in upper extremities (“pulseless disease”)
- Ocular disturbances



Takayasu arteritis

Polyarteritis Nodosa

- Young adults
- Necrotizing vasculitis in many different organs
- Different stages coexist even in same artery
- Puzzling, varied symptoms
- Fatal if untreated, but steroids and cyclophosphamide are curative



PAN: fibrinoid necrosis and thrombotic occlusion

Kawasaki Disease

- Children <4
- Acute, febrile, usually self-limiting
- Danger: involvement of coronary arteries
- “Mucocutaneous lymph node syndrome”
- Delayed-type hypersensitivity reaction?
- Treatment: intravenous Ig



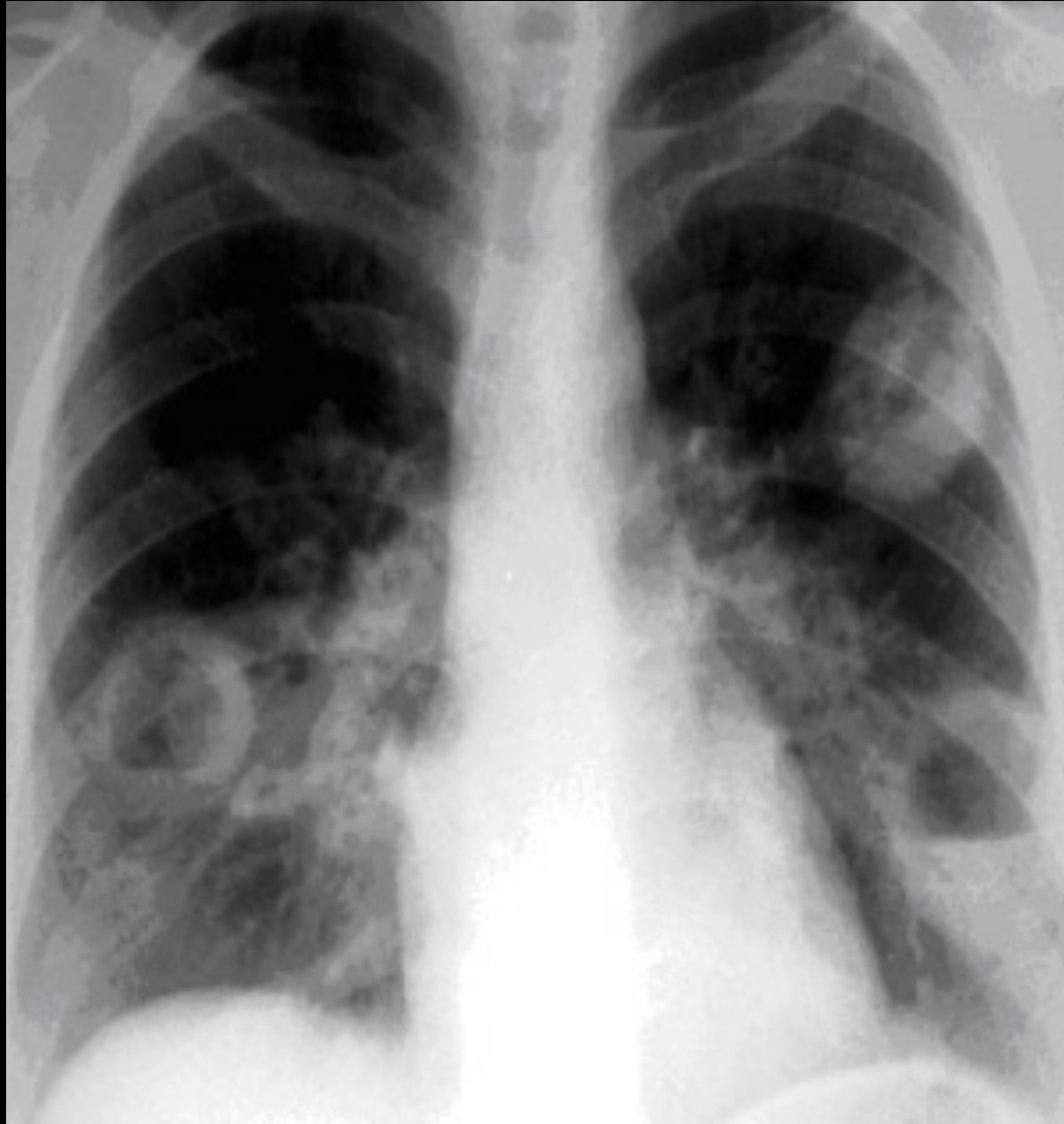
Kawasaki Disease: hand edema, mouth lesions



Kawasaki Disease: “strawberry” tongue

Wegener Granulomatosis

- Most common age = 40s
- Triad: respiratory tract granulomas, vasculitis, renal disease
- c-ANCA positive
- T-cell mediated hypersensitivity response?
- Untreated: fatal in 1 year
- Churg-Strauss: similar, but associated with allergies and asthma, and no renal disease



Wegener granulomatosis: cavitating lung lesions



Wegener granulomatosis: palatal ulceration



Wegener granulomatosis: palatal destruction

Cardiac Pathology Outline

- Blood Vessels
 - Atherosclerosis
 - Hypertension
 - Aneurysms
 - Vasculitis
 - Tumors

Hemangioma

- Very common benign tumor of blood vessels
- Capillary hemangioma
 - Skin, oral mucosa, sometimes organs
 - “Strawberry” type present at birth, regresses
- Cavernous hemangioma
 - Organs, sometimes skin
 - Cosmetic problem (unless in brain)
- Pyogenic granuloma
 - Rapidly growing red nodule on skin, in mouth
 - Microscopically resembles granulation tissue



Capillary hemangioma



Pyogenic granuloma

Kaposi Sarcoma

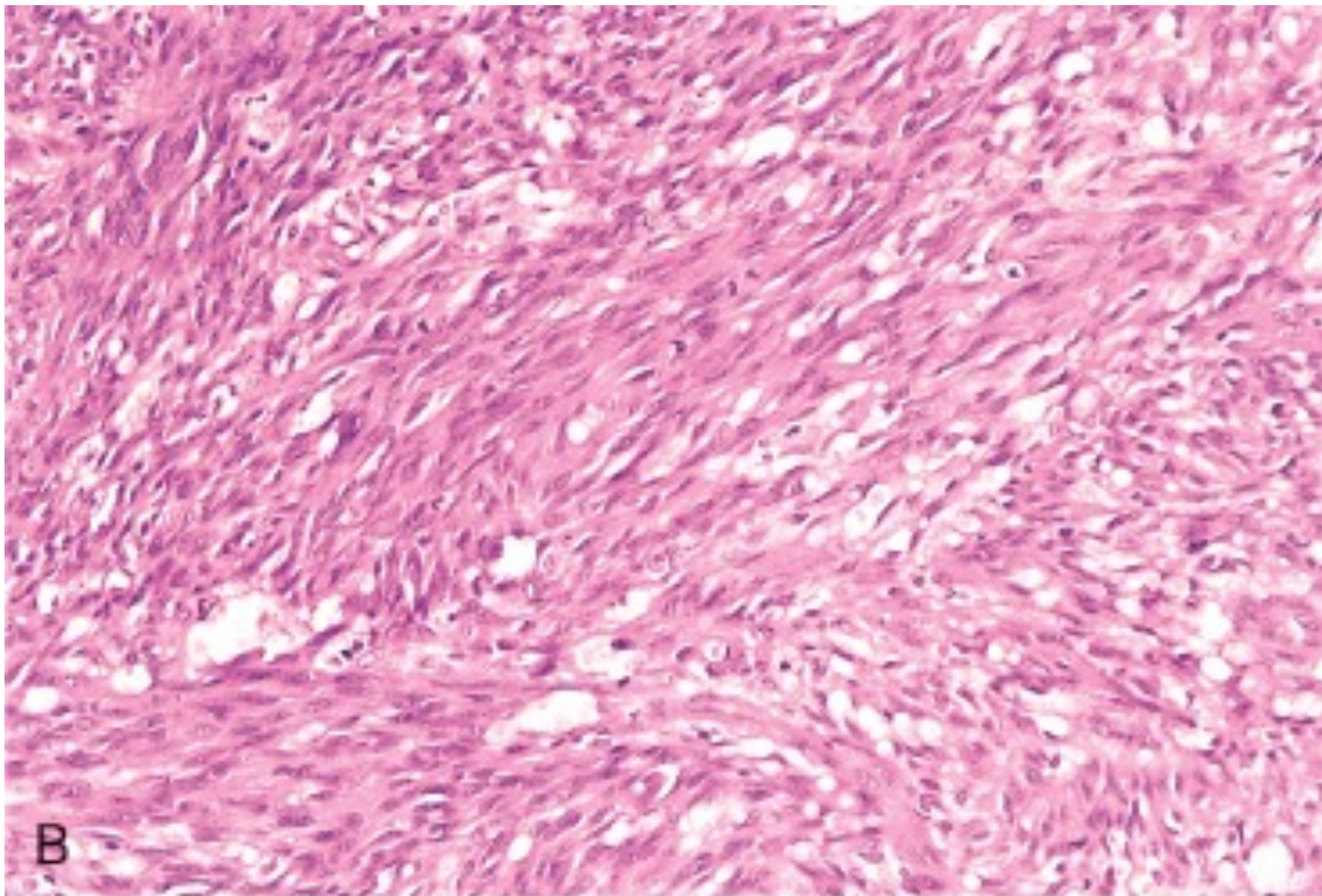
- Low-grade malignancy of endothelial cells
- Four forms: Chronic (older Ashkenazi Jewish males), African, transplant-associated, AIDS-associated
- Clinical course varies (chronic = best)
- Excision can be curative



Kaposi sarcoma



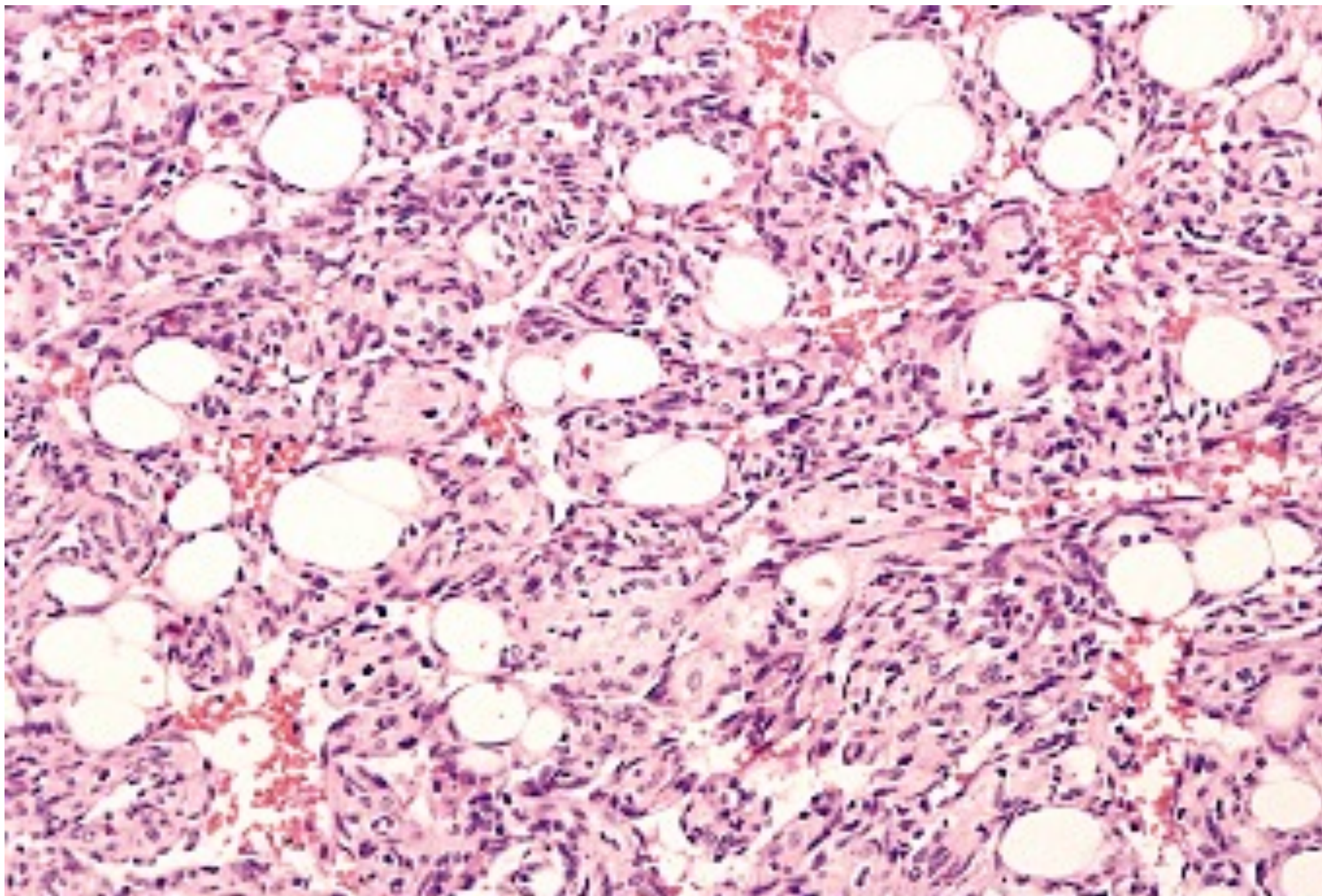
Kaposi sarcoma



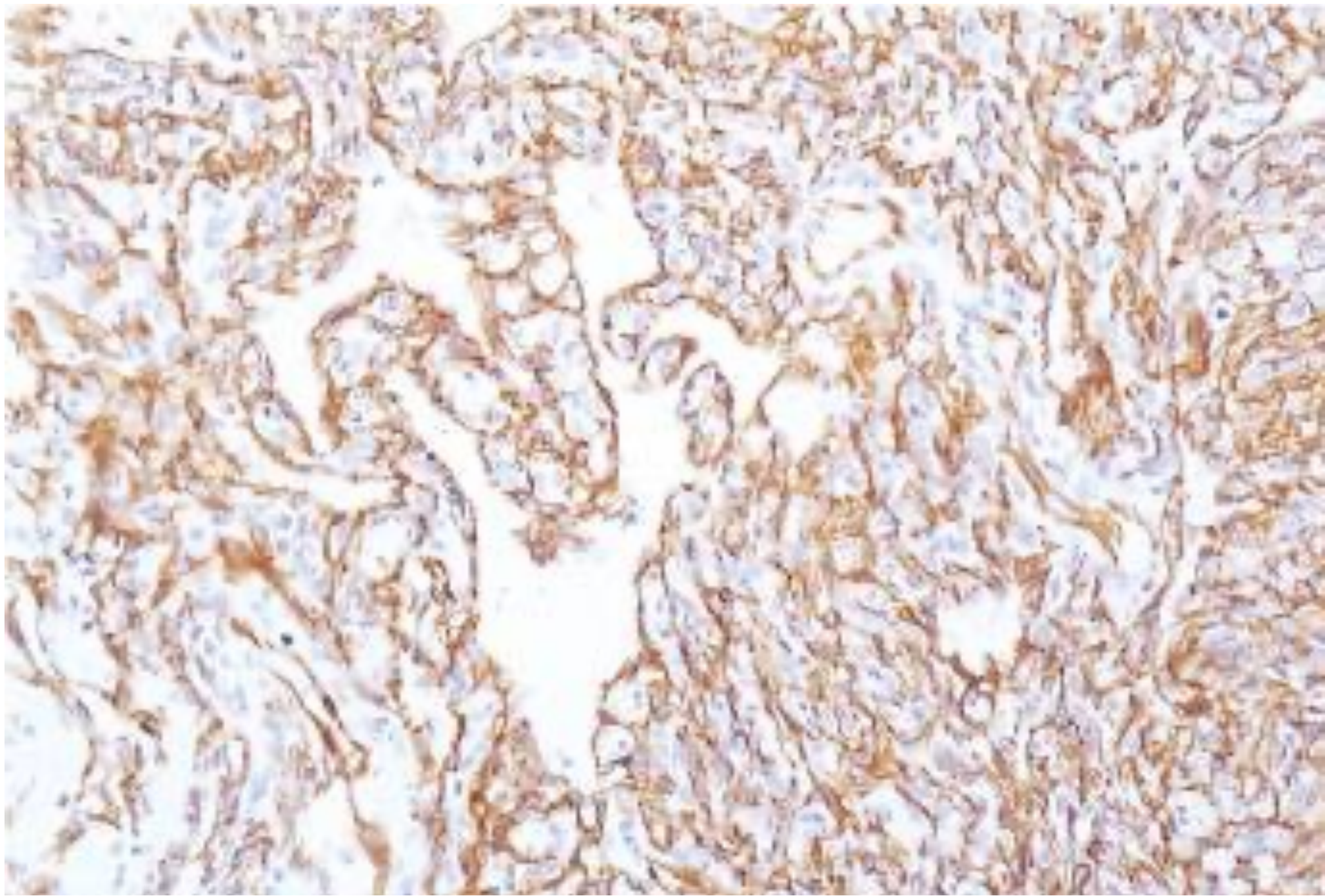
Kaposi sarcoma

Angiosarcoma

- Malignancy of endothelial cells
- Prefers skin, soft tissue, breast, liver
- Arsenic and PVC increase risk
- Well-differentiated to anaplastic
- Metastasize rapidly. 5ys 30%.



Angiosarcoma



Angiosarcoma cells positive for CD31 (an endothelial marker)

Cardiac Pathology Outline

- Blood Vessels
 - Atherosclerosis
 - Hypertension
 - Aneurysms
 - Vasculitis
 - Tumors
- Heart I
- Heart II